

# Community ophthalmology service

the practice<sup>+</sup>  
ophthalmology

## The Practice Ophthalmology Service

Rose House  
Bell Lane Office Village  
Bell Lane  
Little Chalfont  
Amersham  
Buckinghamshire  
HP6 6FA

## Shropshire Ophthalmology

t. 01691 242091 & 01743 322781  
f. 01691 242092 & 01743 322782  
e. [thepractice.cats@nhs.net](mailto:thepractice.cats@nhs.net)  
[www.thepracticeplc.com](http://www.thepracticeplc.com)

New ideas in health services

## Your community based provider

Your community based provider The Practice Ophthalmology Service provides an alternative to hospital based treatment and is offered to patients closer to their homes at various locations.

The service offers the expertise of ophthalmologists, visual field analysers, and Heidelberg Retinal Tomography (HRT) to triage, assess and treat patients in the community.

We use significantly experienced ophthalmologists to deliver our clinics, all of whom are highly skilled and qualified to undertake ophthalmology in a community setting. An up to date list of the team can be found on our website: [www.thepracticeplc.com/referrers/ophthalmology](http://www.thepracticeplc.com/referrers/ophthalmology)

## Exclusions

The service covers the majority of medical referrals, but excludes:

- Patients not registered with an NHS Shropshire CCG or NHS Telford and Wrekin CCG GP
- Patients requiring emergency treatment
- Patients re referred with post operative or post traumatic complications
- Suspected cancer
- Any procedures contained within the CCGs Procedures of Low Clinical Value

Emergency eye conditions should go straight to A&E or to a PEARS accredited Optometrist where appropriate.

## How to refer

Optometrists will refer patients via their GP.

GPs should refer via RAS using the ophthalmology referral form.

All referrals are triaged by one of our consultant ophthalmologists within 24 hours of receiving the referral. If the referral is not suitable for the intermediate service we will refer the patient back to the GP or onto Secondary Care if appropriate within 48 hours. The patient's GP will be advised if we have referred the patient on.

If you require any assistance when referring a patient, please call the Referrer Support Line on 01691 242091 & 01743 322781 or e-mail us on [thepractice.cats@nhs.net](mailto:thepractice.cats@nhs.net).

When referring please provide:

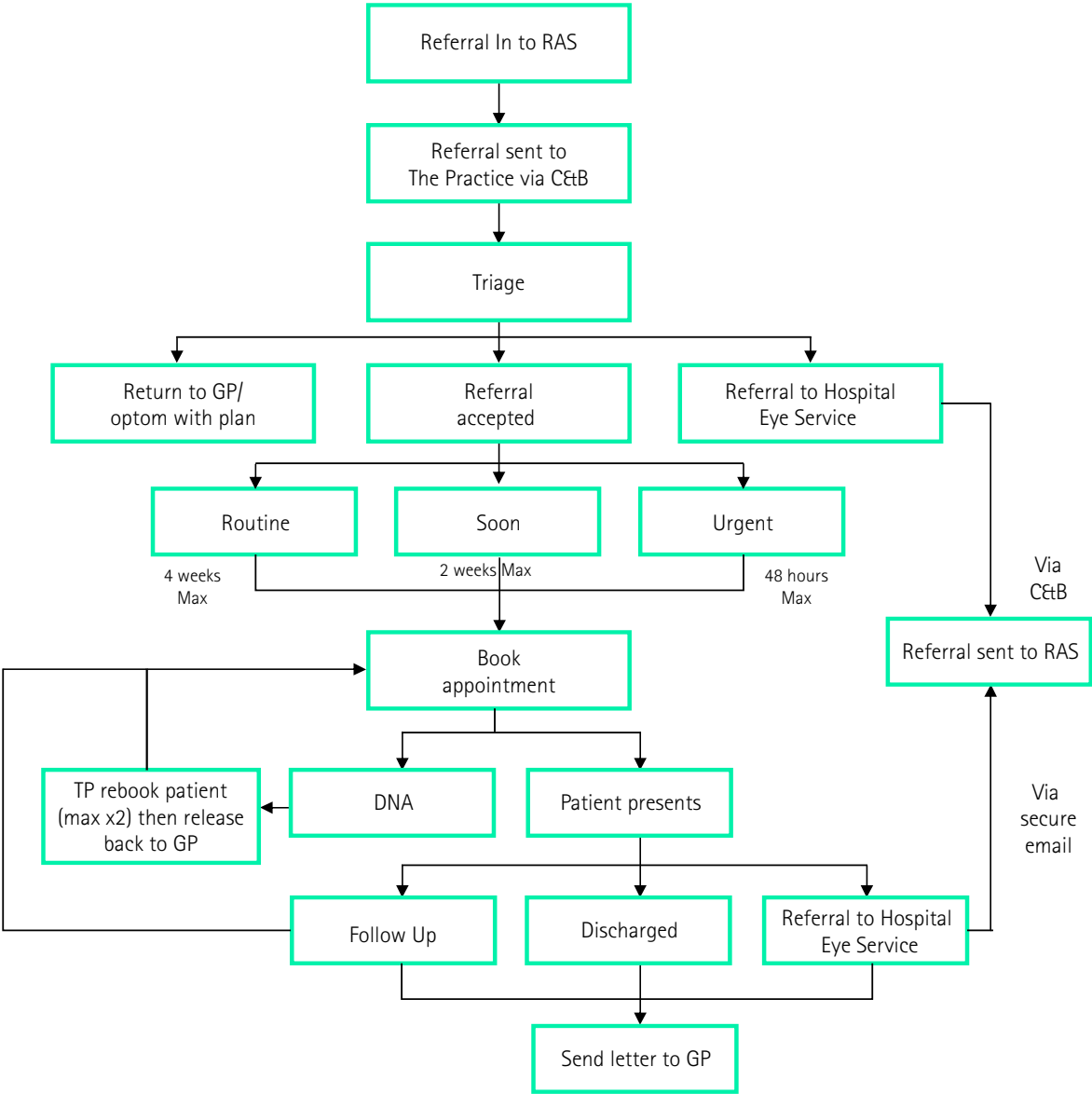
- Patient demographics including NHS number
- Day time contact phone number for the patient, preferably a mobile number

## Helping us to improve the service

We are constantly looking to improve our service to referrers and would be very grateful for any feedback you can give us on your referral experience.

# Care Pathway

## Referral pathway Shropshire Ophthalmology



## Locations

In Shropshire our clinics run from:

### Cambrian Medical Centre

Thomas Savin Road, Off Gobowen Road, Oswestry, SY11 1GA

### Haughmond View Medical Practice

1st Floor, Severn Fields Health Village, Sundorne Road,  
Shrewsbury SY1 4RQ

### Northgate Health Centre,

Bridgnorth, WV16 4EU.

Directions and maps, can be found on our website:

[www.thepracticeplc.com/referrers/ophthalmology/clinics](http://www.thepracticeplc.com/referrers/ophthalmology/clinics)

## Performing a quality service

Community based clinics such as ours are usually more accessible and offer decreased waiting times, helping to improve patient satisfaction. At The Practice we offer clinical services to NHS patients who need to be sure of the very highest standards. But it's how we do what we do that makes the difference. We aim to deliver genuinely caring and thoughtful patient centred services, minimise waiting times and make the whole experience one to remember with satisfaction. From first referral through diagnosis to effective treatment we promise true professionalism.

At The Practice, patients come first. If you would like to discuss the services provided by The Practice further, or arrange for us to visit you please contact us on 01691 242091 & 01743 322781.

Information in this leaflet is correct at the time of going to press. We continually seek to improve our service, and therefore all the very latest information will be on our website.

The Practice Services Ltd trading as The Practice. Registered Office: Rose House, Bell Lane Office Village, Little Chalfont, Bucks HP6 6FA. Registered in England and Wales: 05555460.