

## Definition of acceptable image quality

Version 3.0, Agreed by the Grading and Quality Assurance Subcommittee, 9 May 2006

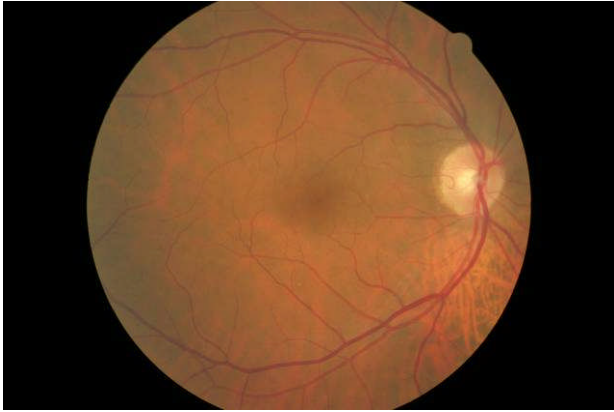

Author: Peter Scanlon <[peter.scanlon@glos.nhs.uk](mailto:peter.scanlon@glos.nhs.uk)>

Review date: May 2008

- Photographers should capture 2 x nominal 45° fields per eye (1 x fovea centred, 1 x disc centred).
- A combined assessment of field position and image quality should be made for each eye.
- Images must be utilised only if the grader is confident the quality is sufficient.
- All grading is to be performed by trained and accredited staff.

A combined assessment of field position and image quality is made in the software as follows:

### GOOD

<p><b>Macular image</b> centre of fovea <math>\leq 1DD</math> from centre of image &amp; vessels clearly visible within 1DD of centre of fovea &amp; vessels visible across <math>&gt;90\%</math> of image</p>	<p><b>AND</b></p>	<p><b>Disc image</b> centre of disc <math>\leq 1DD</math> from centre of image &amp; fine vessels clearly visible on surface of disc &amp; vessels visible across <math>&gt;90\%</math> of image</p>
		

### ADEQUATE

<p><b>Macular image</b> centre of fovea <math>&gt;2DD</math> from edge of image &amp; vessels visible within 1DD of centre of fovea</p>	<p><b>AND</b></p>	<p><b>Disc image</b> complete optic disc <math>&gt;2DD</math> from edge of image &amp; fine vessels visible on surface of disc</p>

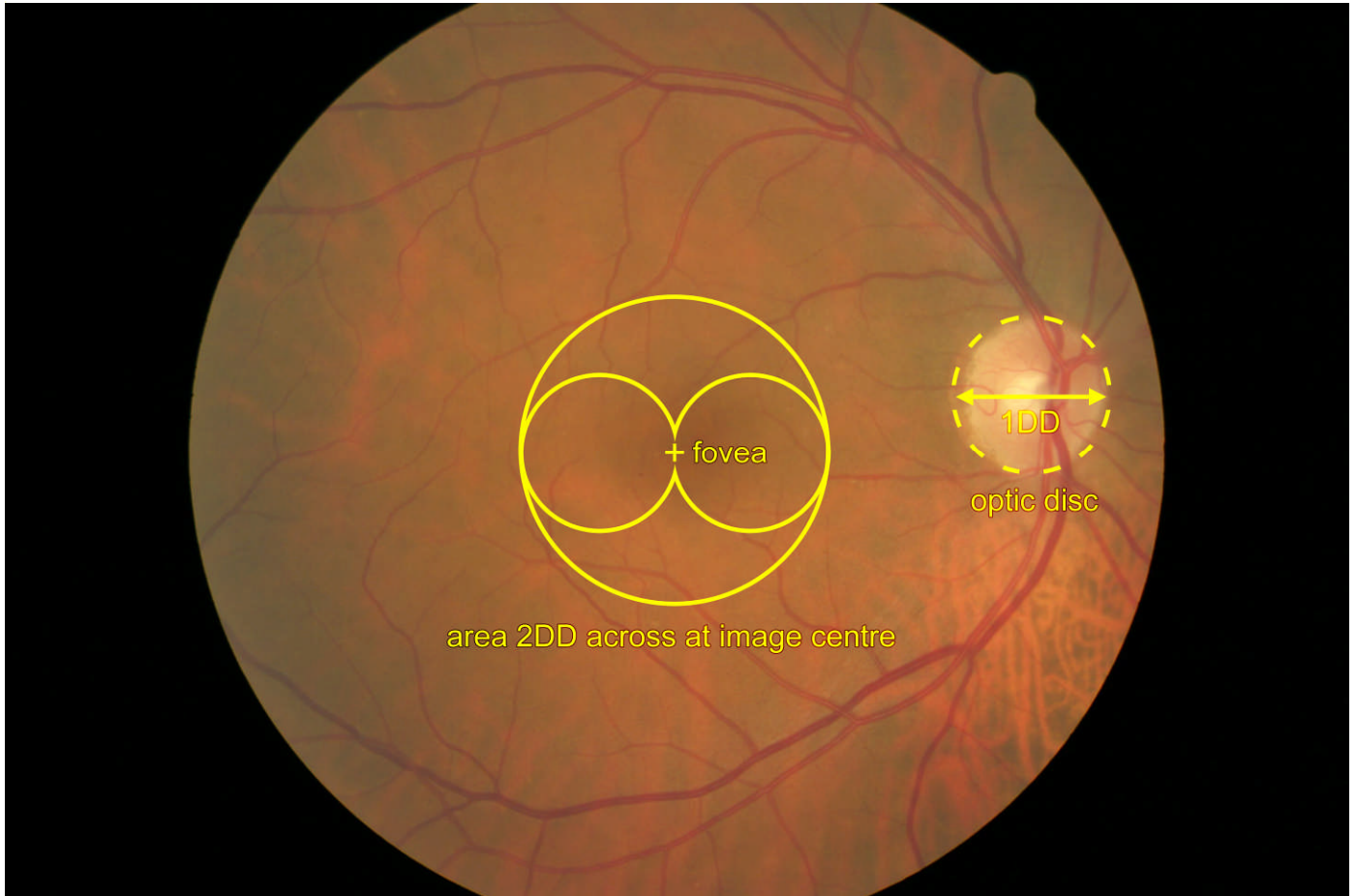
In some unusual cases (particularly in patients with a large disc), an image may fall within both **good** and **adequate** categories above. In such cases, the image should be classified as **good**.

### INADEQUATE (ungradable)

Failure to meet definition of **adequate** above UNLESS referable diabetic retinopathy (R2, R3, M1, unstable treated proliferative diabetic retinopathy) visible anywhere in the eye.

## Definitions of disc, fovea, 1DD

The image shown below is a perfectly aligned macular view of the right eye. The fovea lies at the centre of the image and is marked by a '+' symbol.



The English National Screening Programme is grateful to the Scottish Diabetic Retinopathy Screening Collaborative from whom these definitions of acceptable images have been derived.